

新品推介
PRODUCT INTRODUCTION

2021

CLOTH TEXTURE SERIES

布纹系列

已申请专利，仿冒必究。

AGO
PLASTIC RATTAN
SINCE 1999

布纹系列

CLOTH TEXTURE SERIES

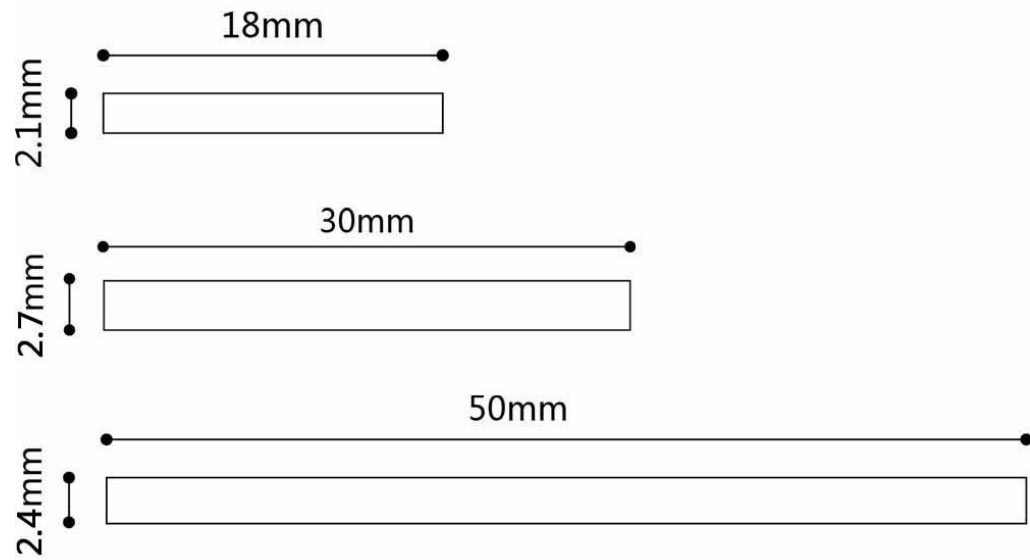
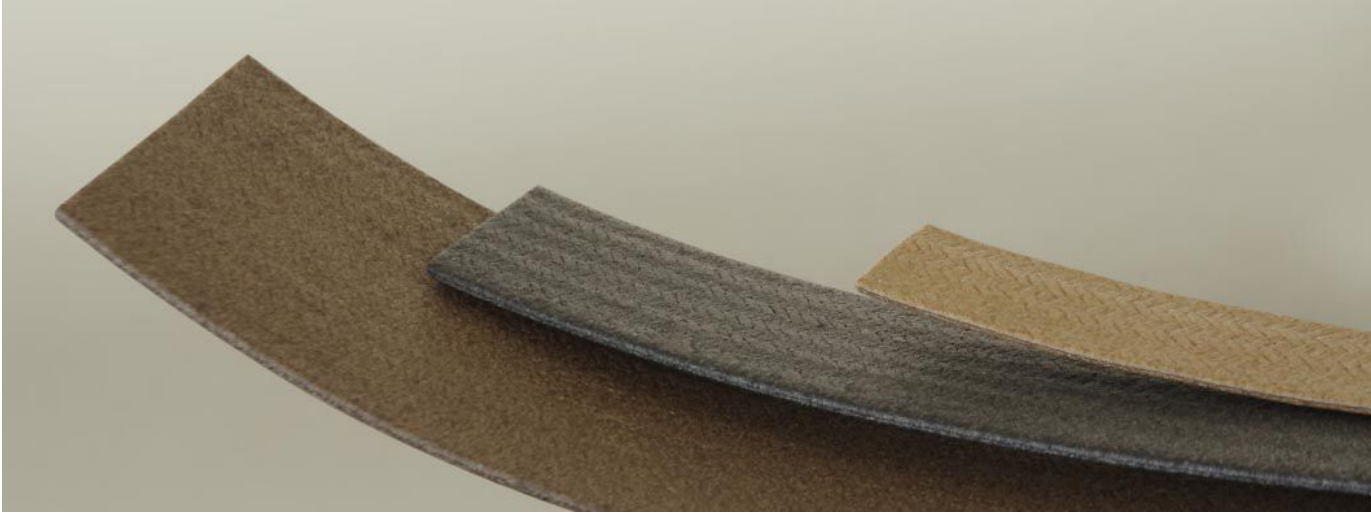
布纹系列与木纹系列有异曲同工之妙。

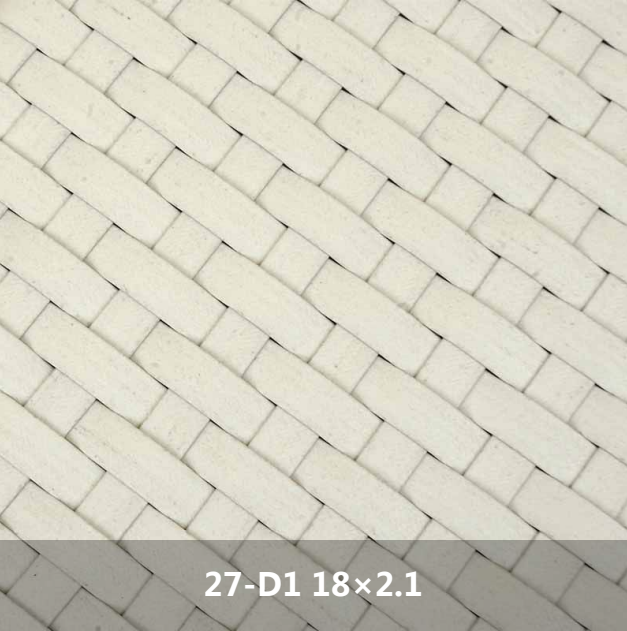
布纹系列的表面高度仿真织带，然而较于织带，其价格更低，耐污性能更好。

除此以外，布纹系列还具备防腐蚀，防潮，耐晒的优点。产品的韧性高，柔软度好，是代替价格高昂的织带的一个好选择。

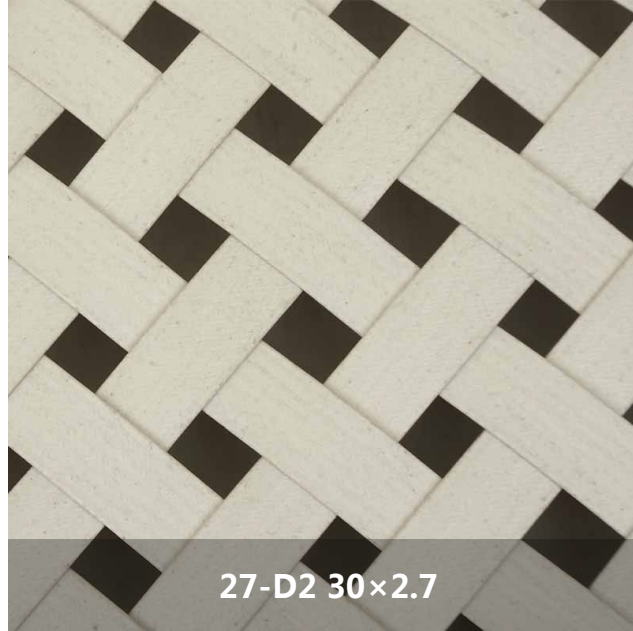


已申请专利，仿冒必究。

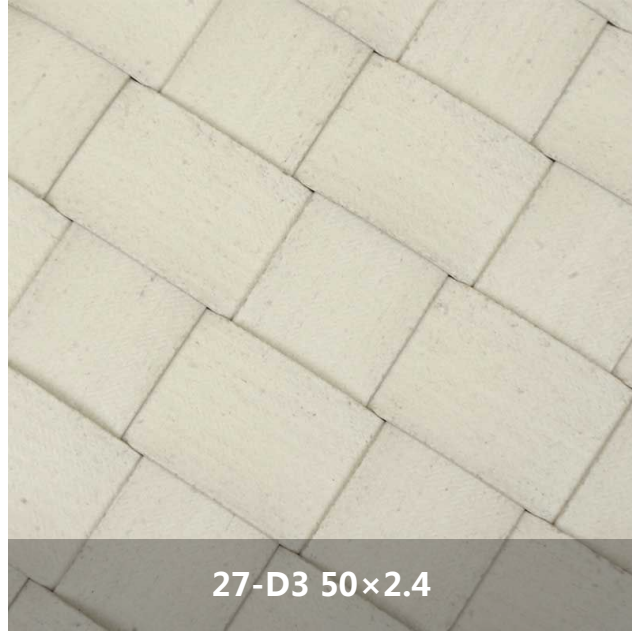




27-D1 18×2.1



27-D2 30×2.7



27-D3 50×2.4



27-D4 18×2.1

布纹系列

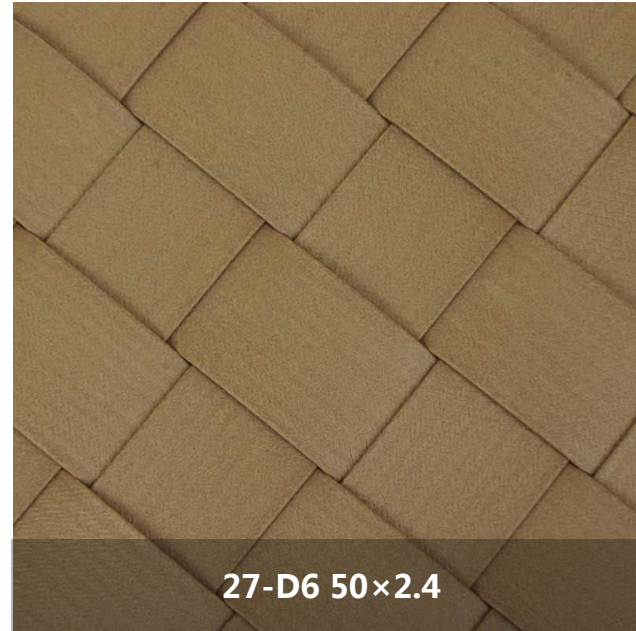
CLOTH TEXTURE SERIES



已申请专利，仿冒必究。



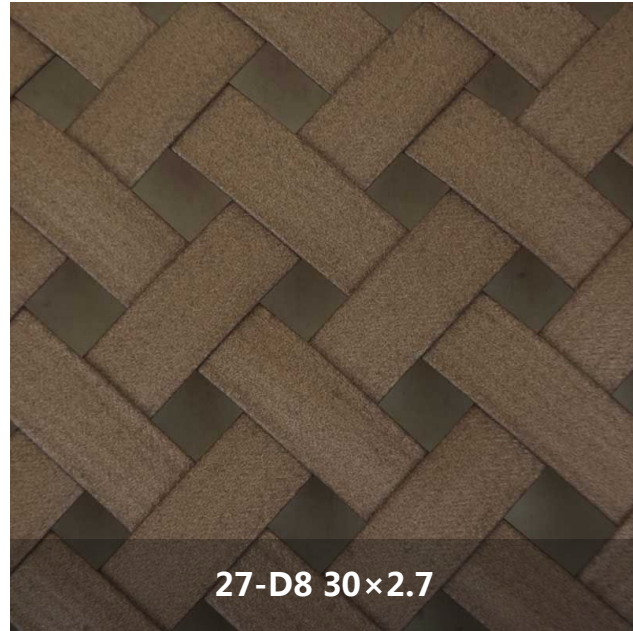
27-D5 30×2.7



27-D6 50×2.4



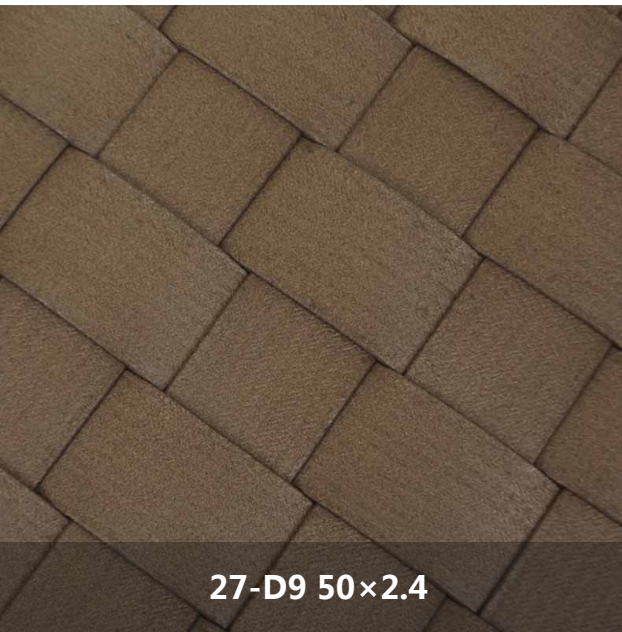
27-D7 18×2.1



27-D8 30×2.7

布纹系列

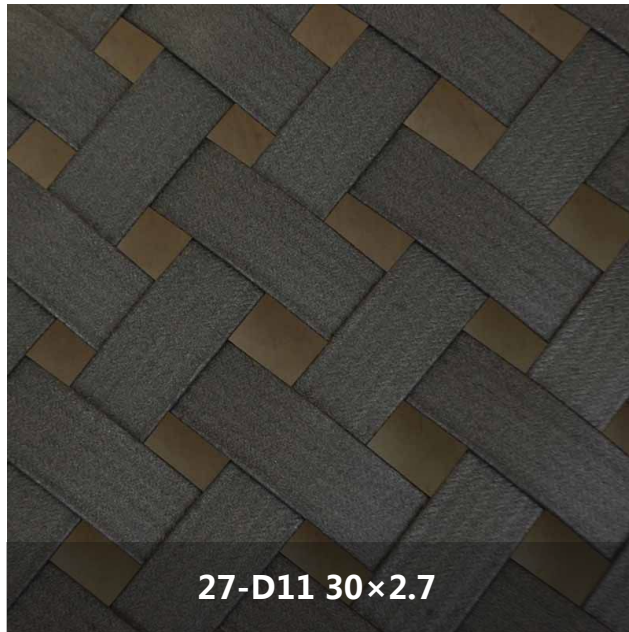
已申请专利，仿冒必究。
CLOTH TEXTURE SERIES



27-D9 50×2.4



27-D10 18×2.1



27-D11 30×2.7



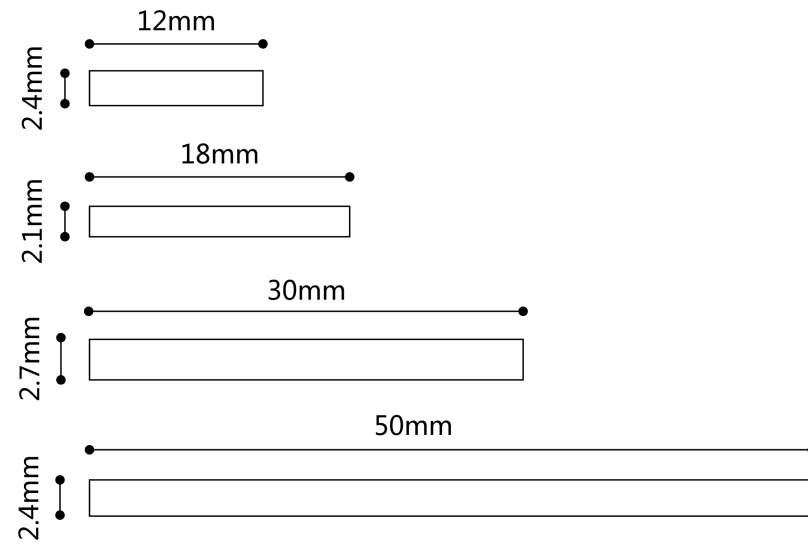
27-D12 50×2.4

CLOTH TEXTURE SERIES

布纹系列

已申请专利，仿冒必究。

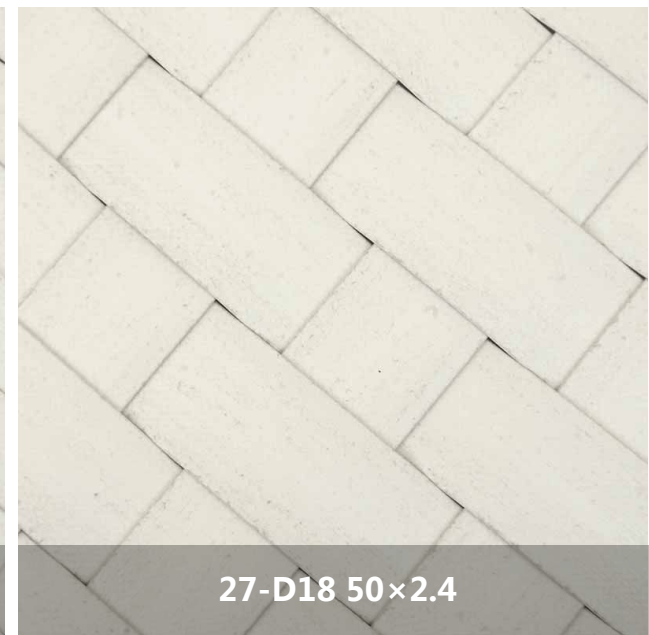
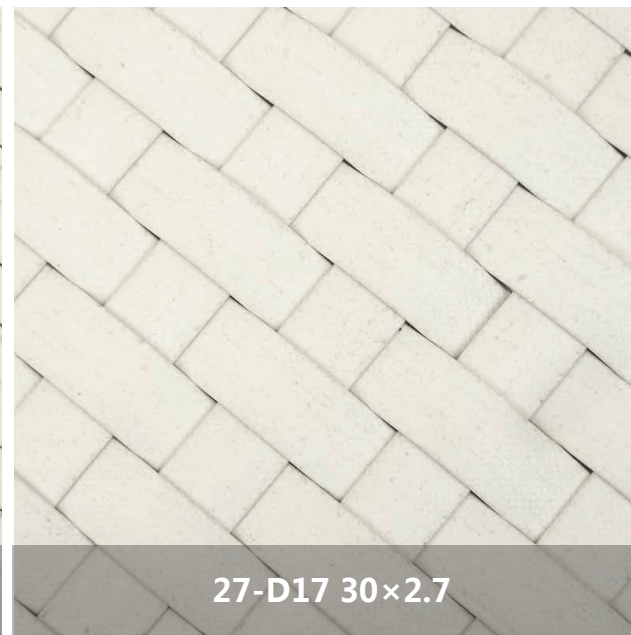
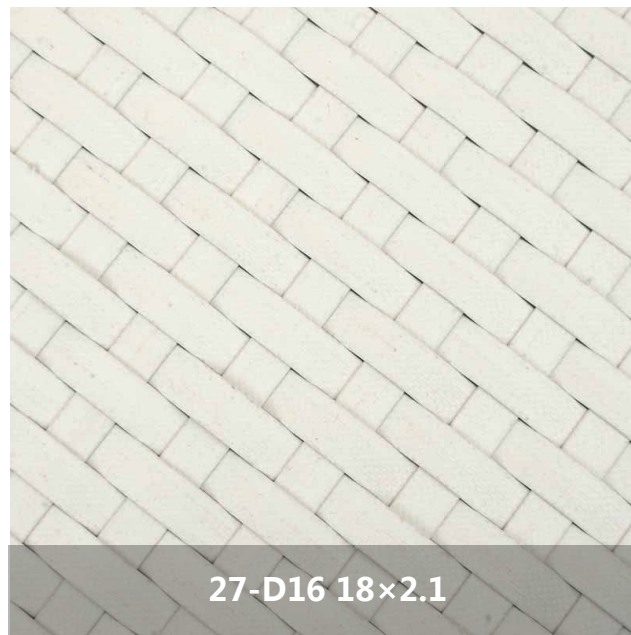
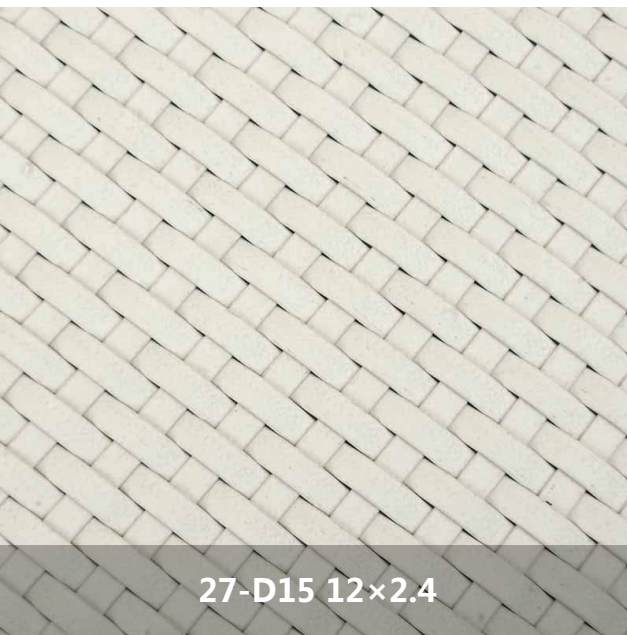
AGO
PLASTIC RATTAN
SINCE 1999

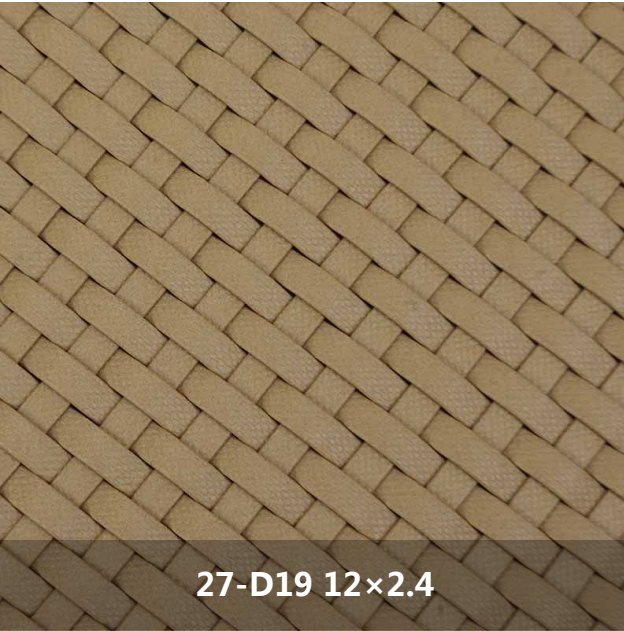


已申请专利，仿冒必究。

布纹系列

CLOTH TEXTURE SERIES





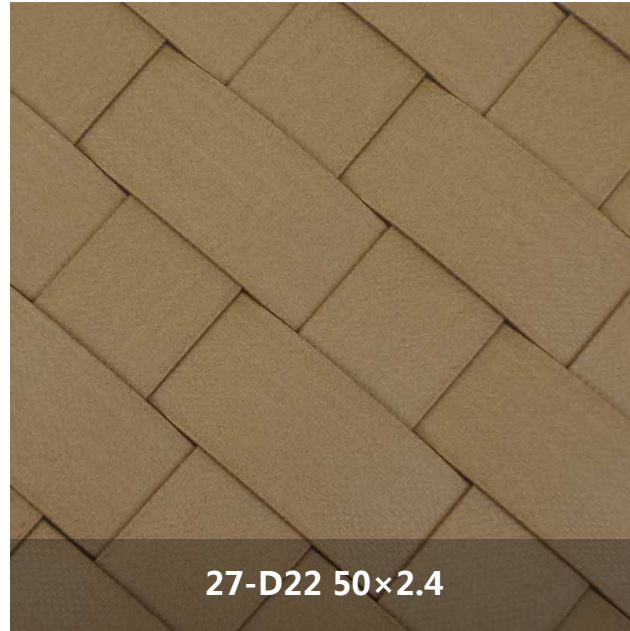
27-D19 12×2.4



27-D20 18×2.1



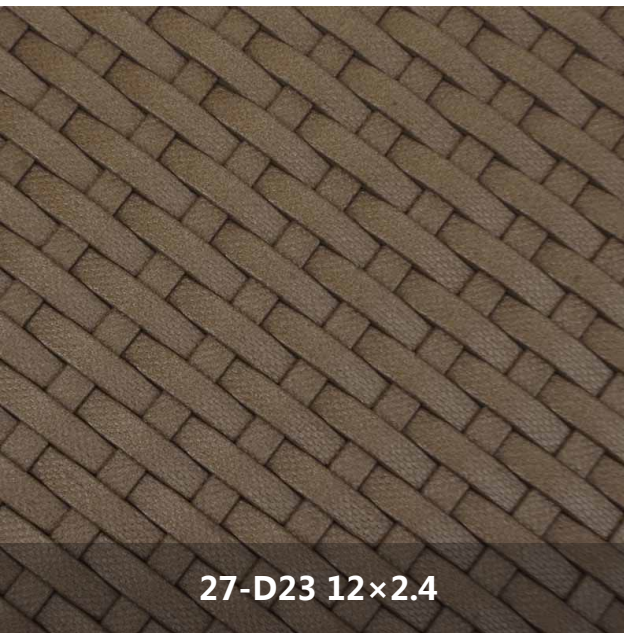
27-D21 30×2.7



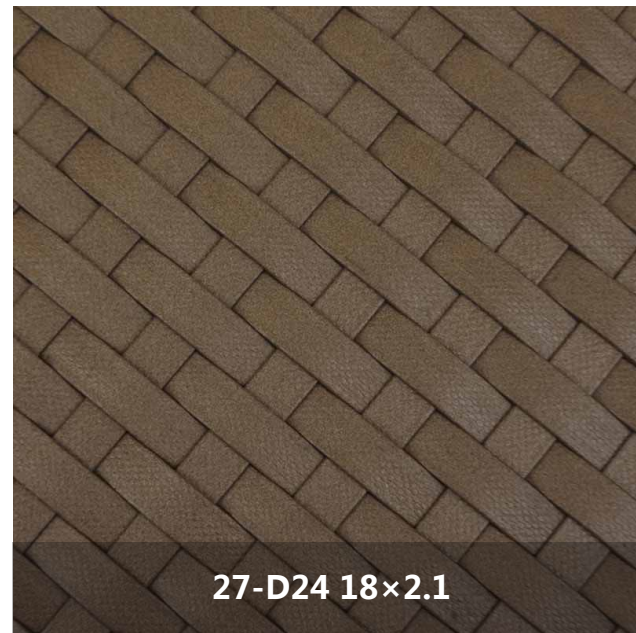
27-D22 50×2.4

布纹系列

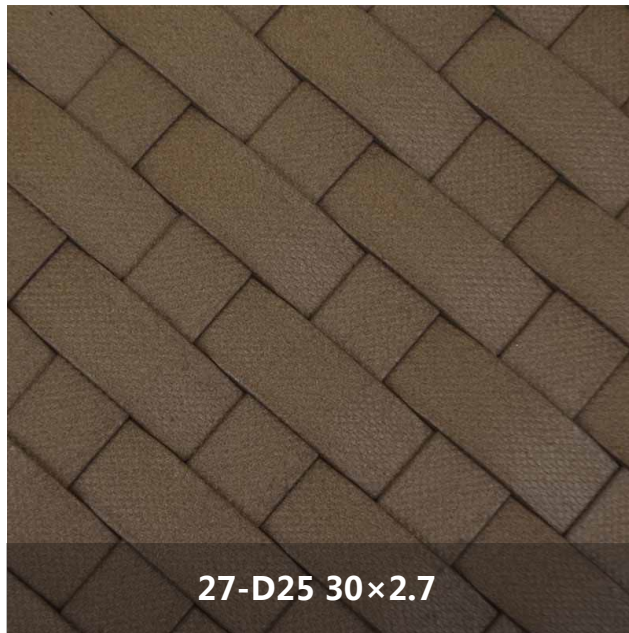
已申请专利，仿冒必究。
CLOTH TEXTURE SERIES



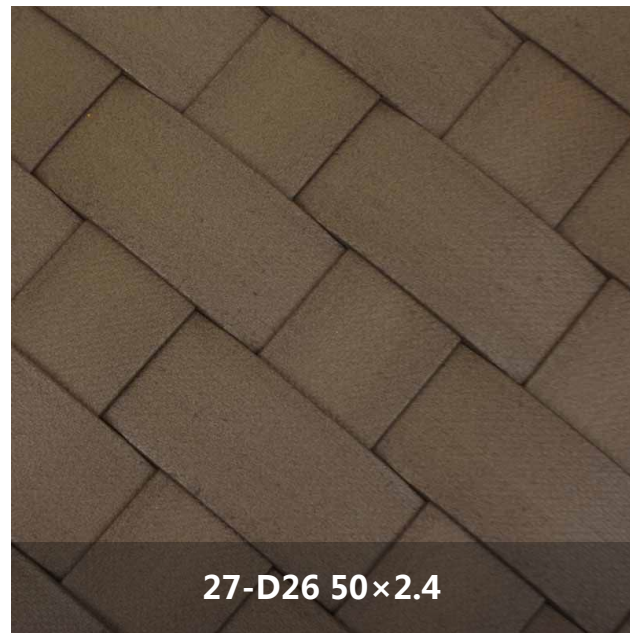
27-D23 12×2.4



27-D24 18×2.1



27-D25 30×2.7



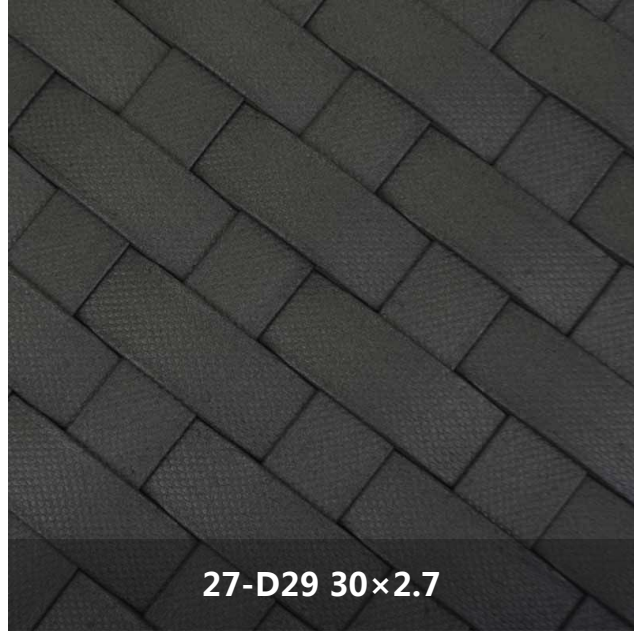
27-D26 50×2.4



27-D27 12×2.4



27-D28 18×2.1



27-D29 30×2.7

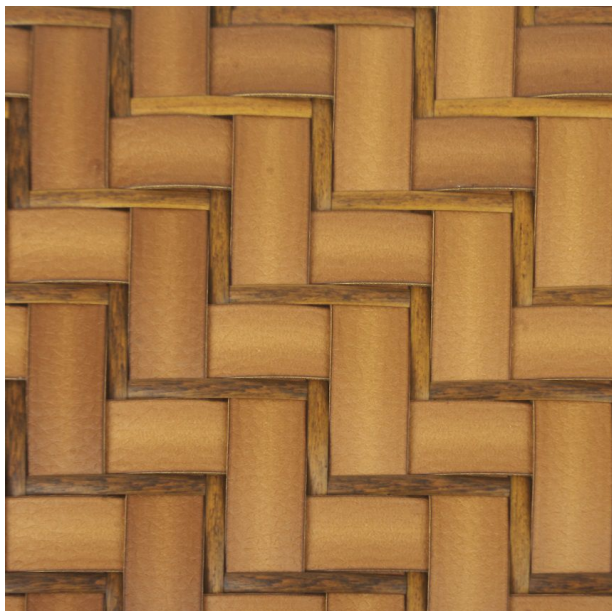


27-D30 50×2.4

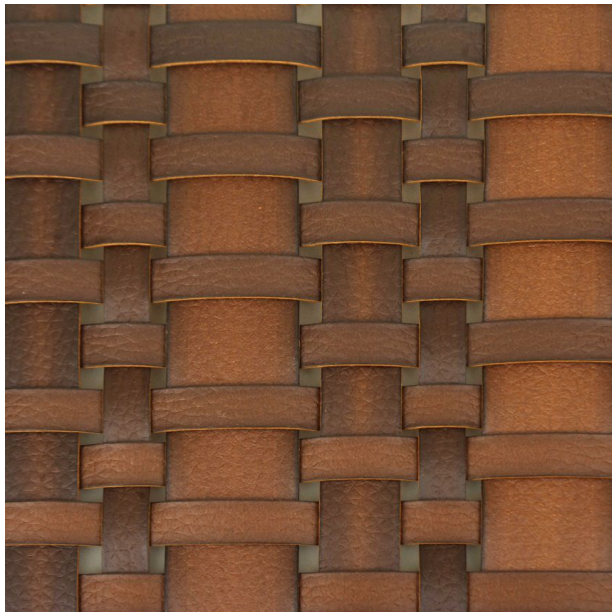
布纹系列

CLOTH TEXTURE SERIES

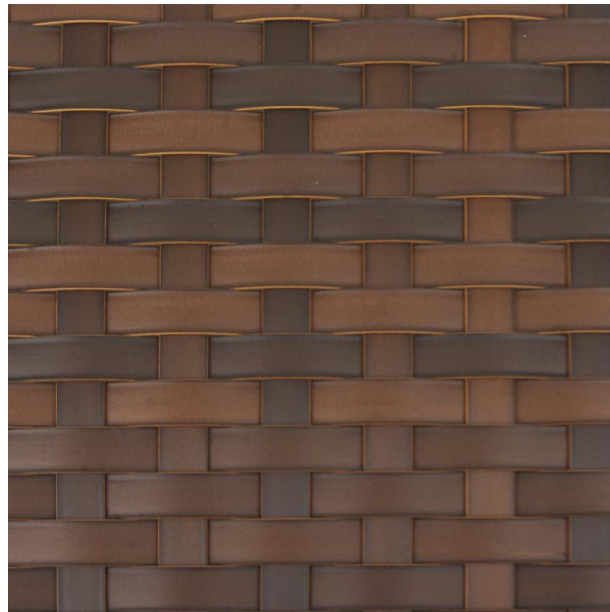
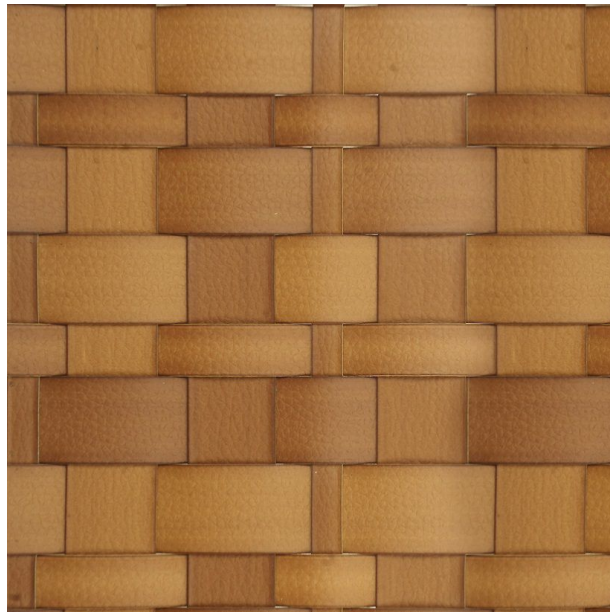
已申请专利，仿冒必究。



布纹系列
CLOTH TEXTURE SERIES



推荐编织方法



参考收口方法



运用铆钉收口



收口藏于框架内



框架开缝，收口藏于缝内



使用参考

注：图片仅供参考藤条的使用方法，版权属于产品的公司所有，仿冒后果自负。

THANKS

AGO
PLASTIC RATTAN
SINCE 1999

www.china-ago.com

佛山市艺骏雄塑胶仿藤有限公司
AGO PLASTIC RATTAN CO.,LTD.

TEL:86-757-26600661/26600662

FAX:86-757-26322441

