

NEW PRODUCT
PROMOTION **2021**

布纹系列

CLOTH TEXTURE SERIES

Has applied for a patent, all rights reserved.

AGO
PLASTIC RATTAN
SINCE 1999

CLOTH TEXTURE SERIES

布纹系列

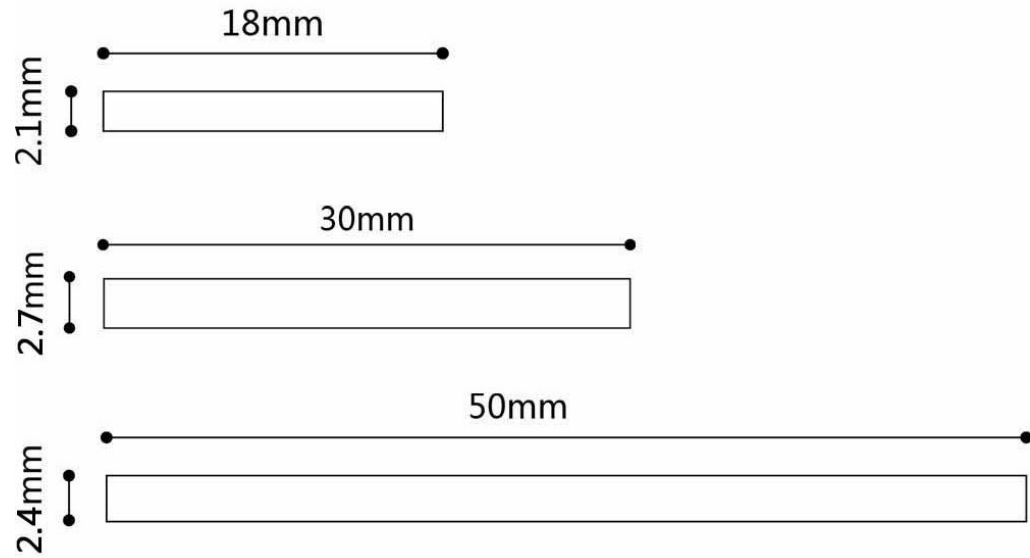
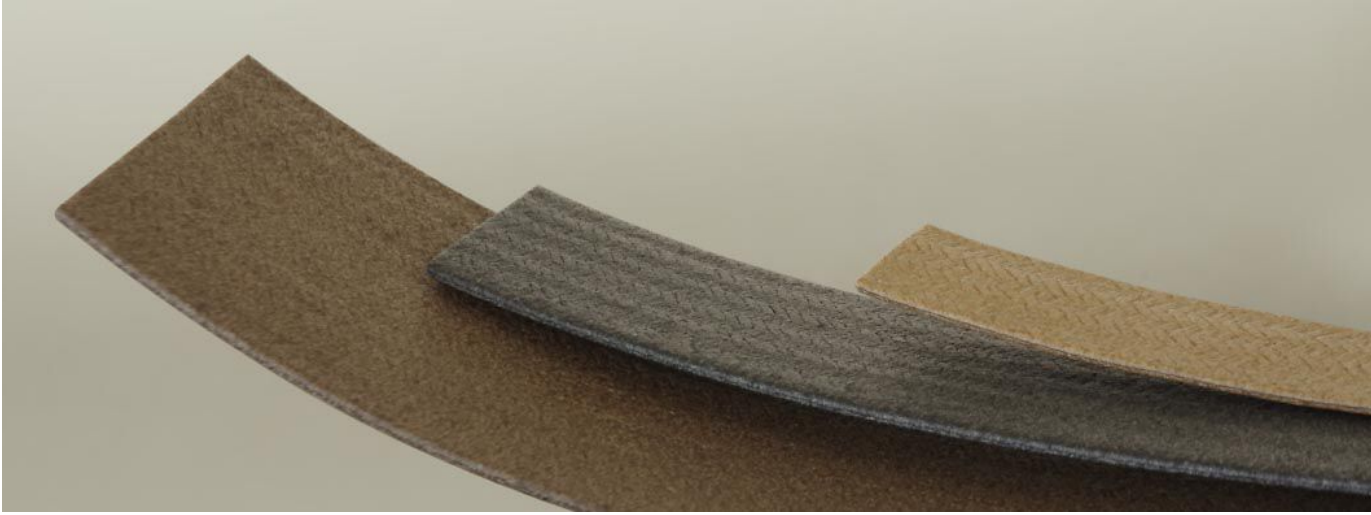
Cloth Texture Series and Wood Grain Series have the same meaning.

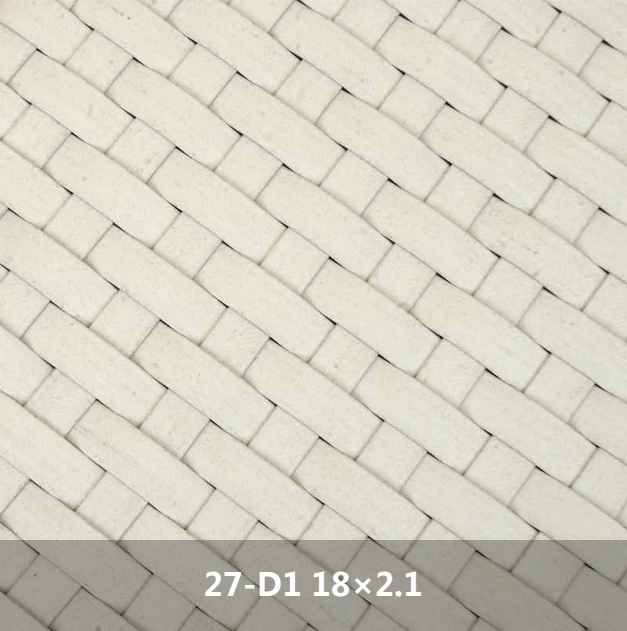
The surface of the Cloth Texture Series is highly simulated webbing, compared to the webbing, Cloth Texture Series is good value, and better stain resistance.

Other than that, Cloth Texture Series also has the advantages of corrosion resistance, moisture resistance, and UV resistance. The product has high toughness and softness, which is a good choice to replace expensive webbing.

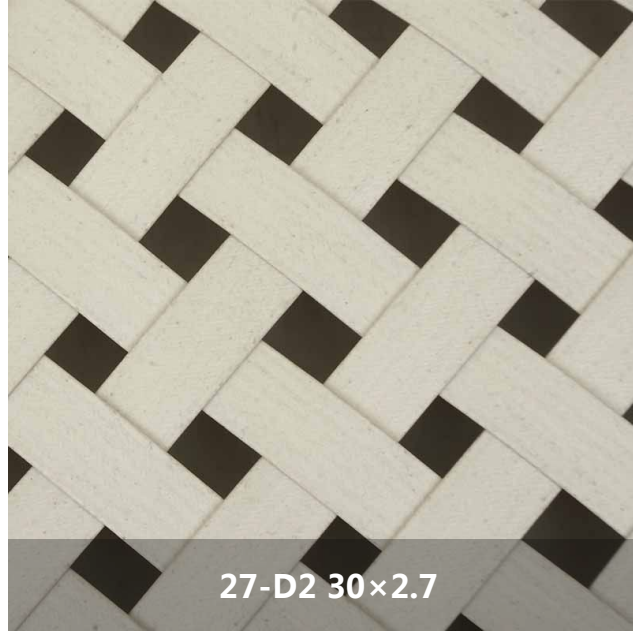


Has applied for a patent, all rights reserved.

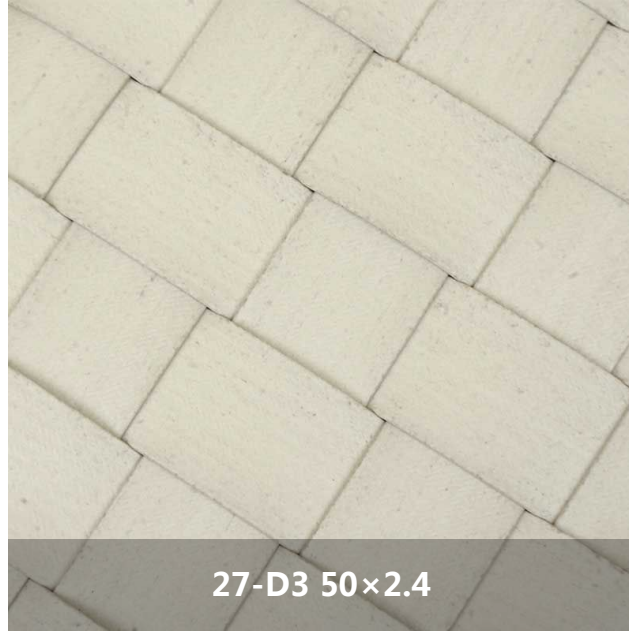




27-D1 18×2.1



27-D2 30×2.7



27-D3 50×2.4



27-D4 18×2.1

CLOTH TEXTURE SERIES

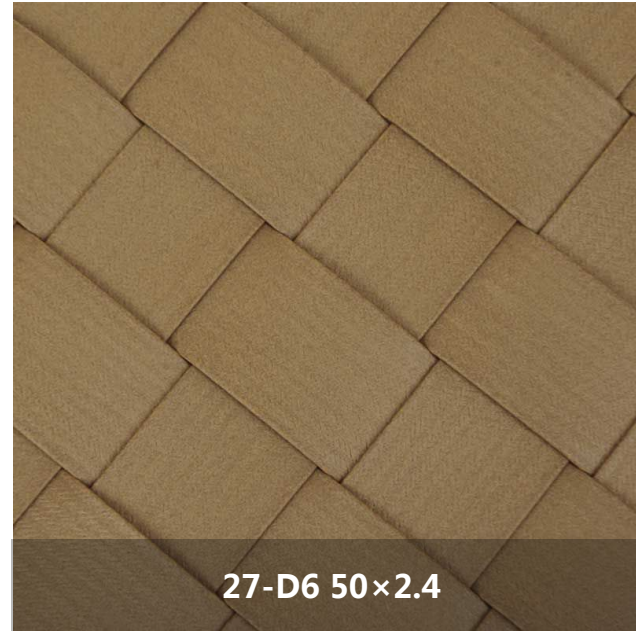
布纹系列



Has applied for a patent, all rights reserved.



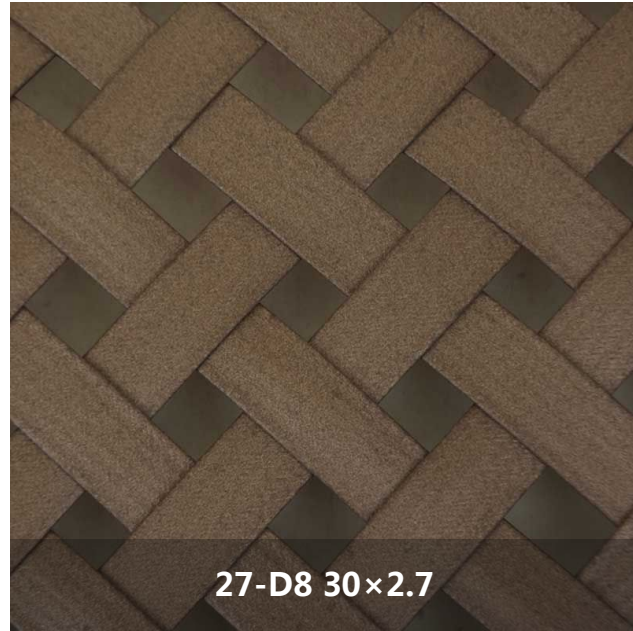
27-D5 30×2.7



27-D6 50×2.4



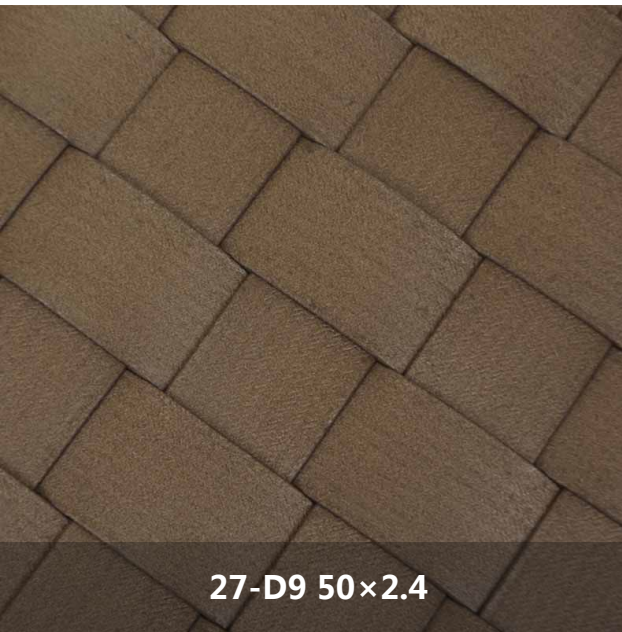
27-D7 18×2.1



27-D8 30×2.7

CLOTH TEXTURE SERIES

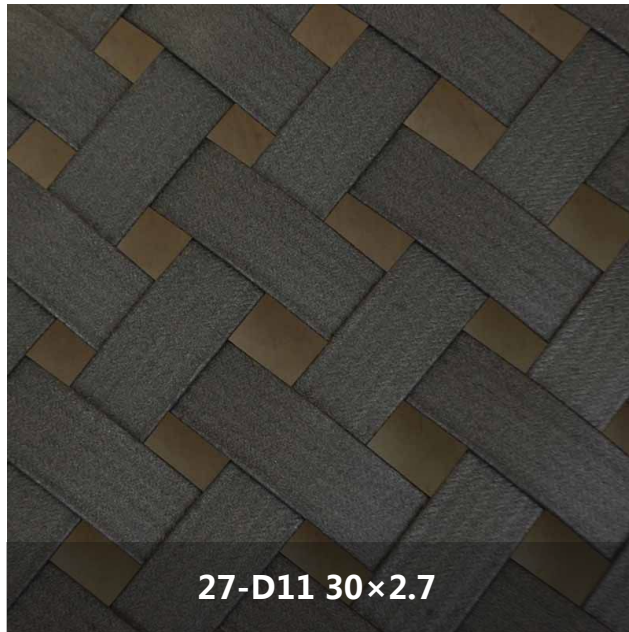
布纹系列 Has applied for a patent, all rights reserved.



27-D9 50×2.4



27-D10 18×2.1



27-D11 30×2.7



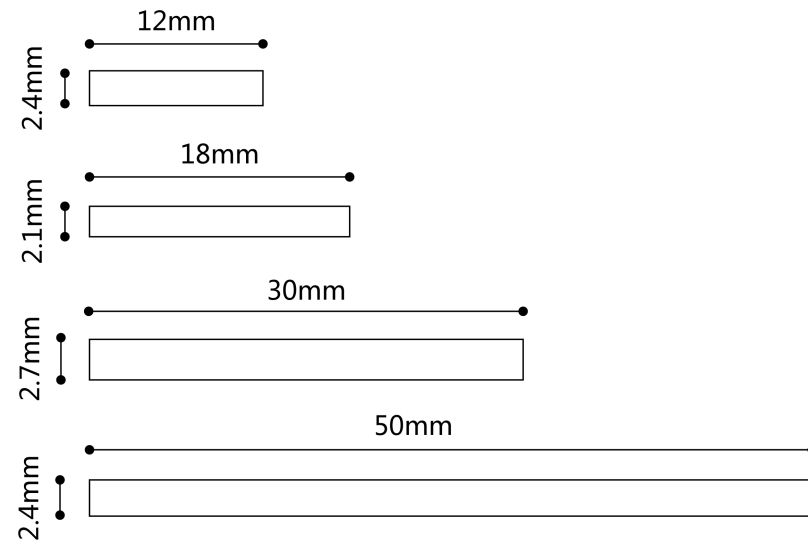
27-D12 50×2.4

布纹系列

CLOTH TEXTURE SERIES

Has applied for a patent, all rights reserved.

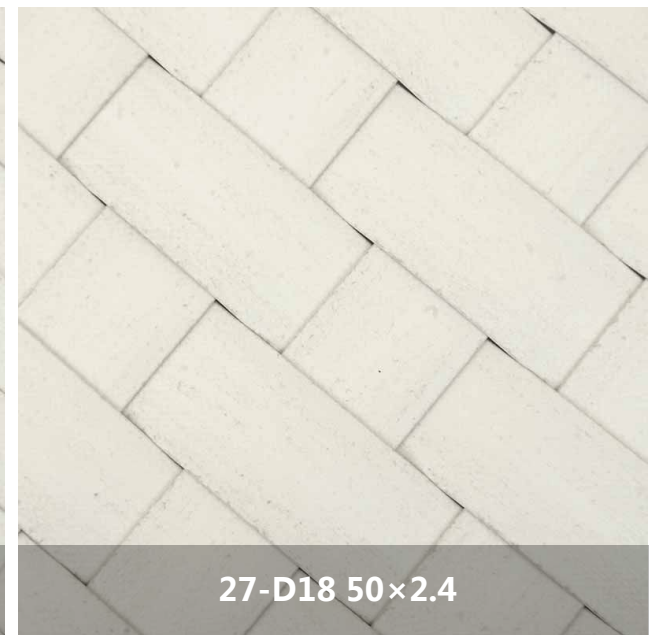
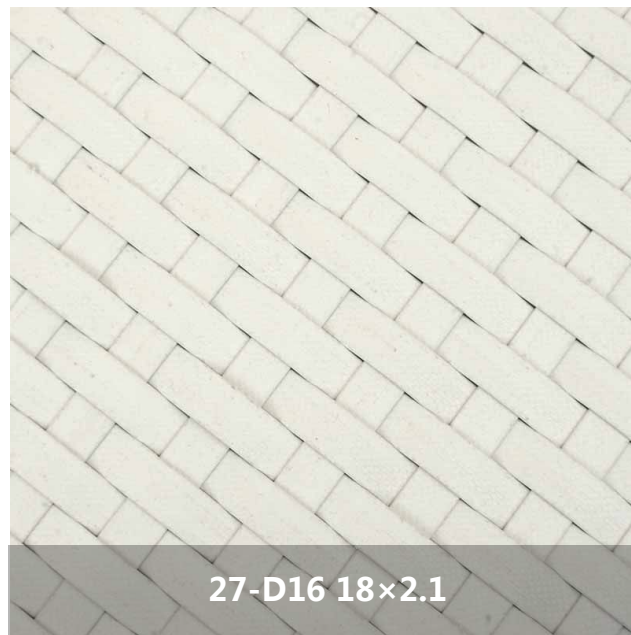
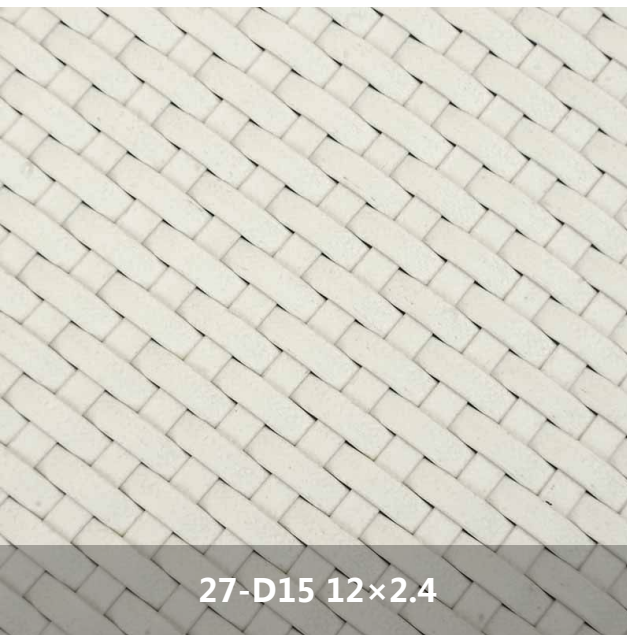
AGO
PLASTIC RATTAN
SINCE 1999

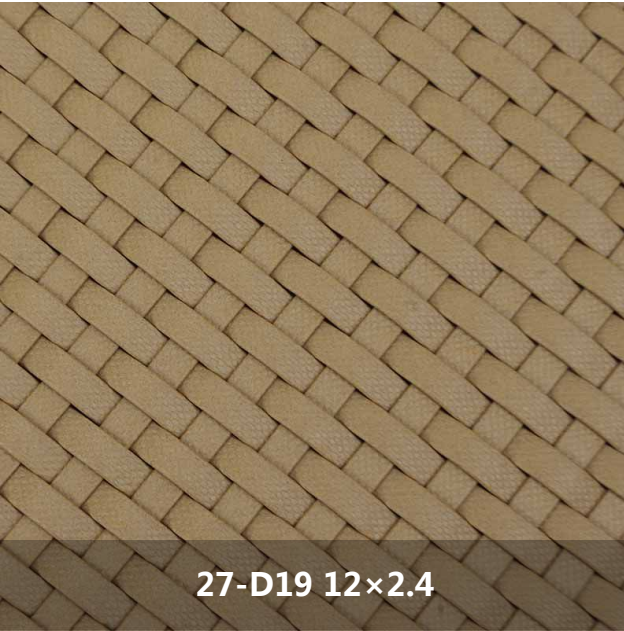


Has applied for a patent, all rights reserved.

CLOTH TEXTURE SERIES

布纹系列





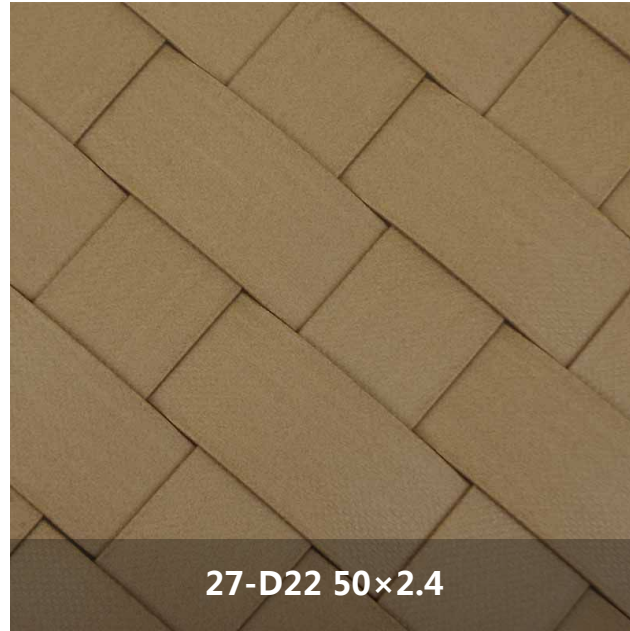
27-D19 12×2.4



27-D20 18×2.1



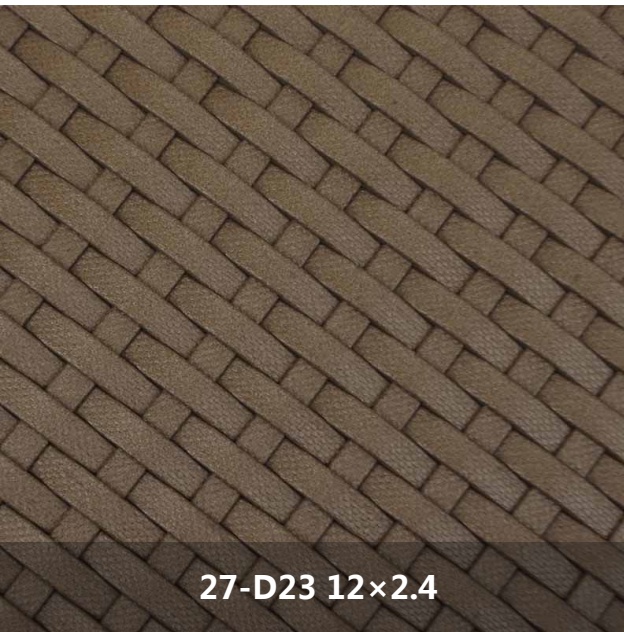
27-D21 30×2.7



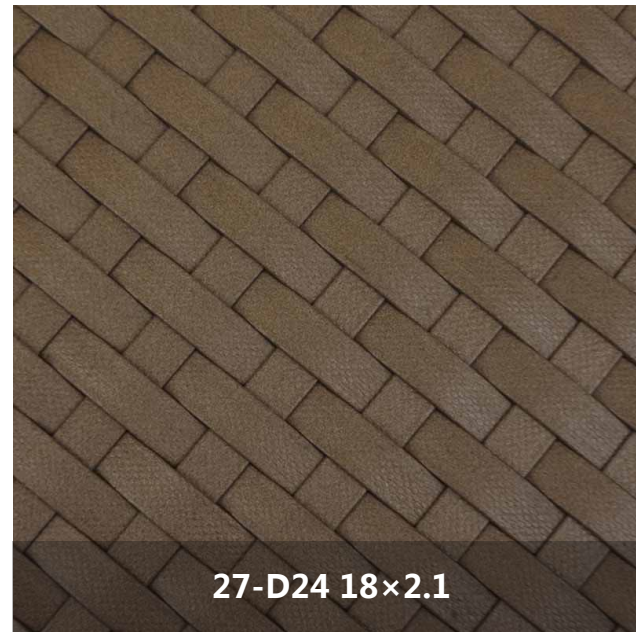
27-D22 50×2.4

CLOTH TEXTURE SERIES

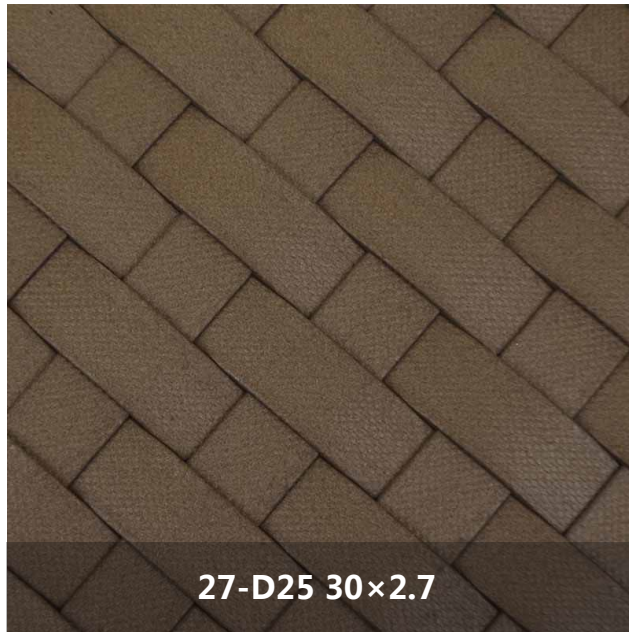
布纹系列 Has applied for a patent, all rights reserved.



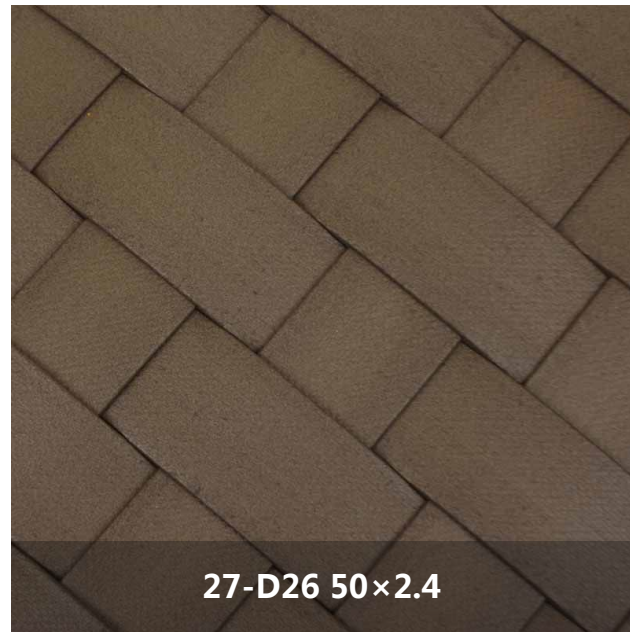
27-D23 12×2.4



27-D24 18×2.1



27-D25 30×2.7



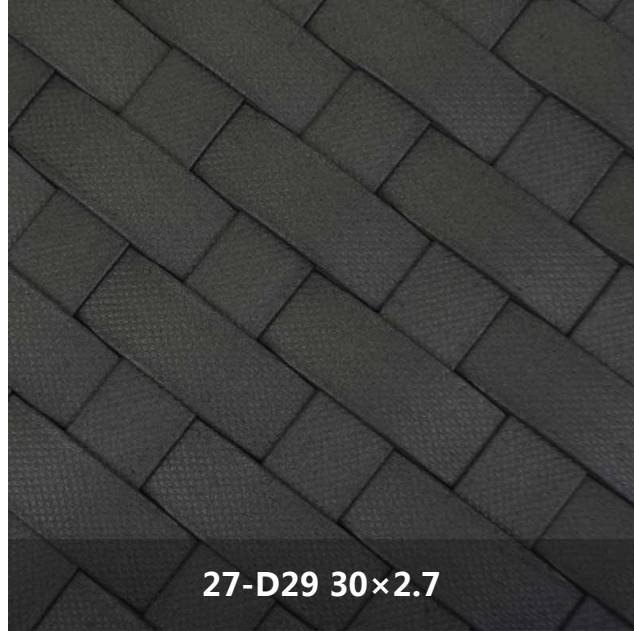
27-D26 50×2.4



27-D27 12×2.4



27-D28 18×2.1



27-D29 30×2.7



27-D30 50×2.4

CLOTH TEXTURE SERIES

Has applied for a patent, all rights reserved.

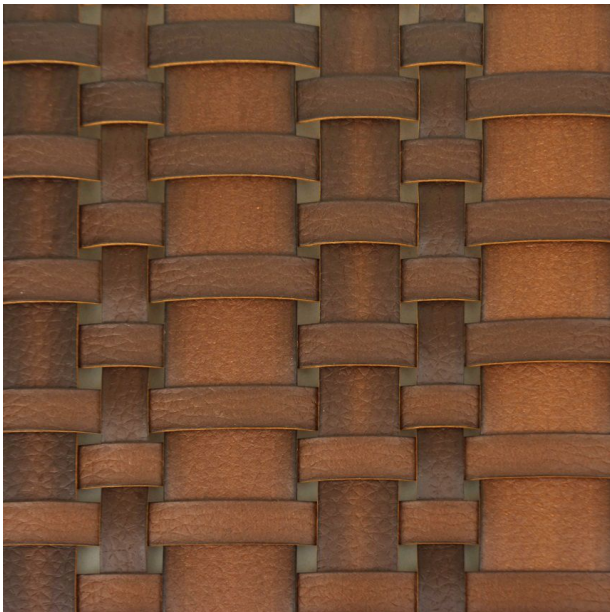
布纹系列



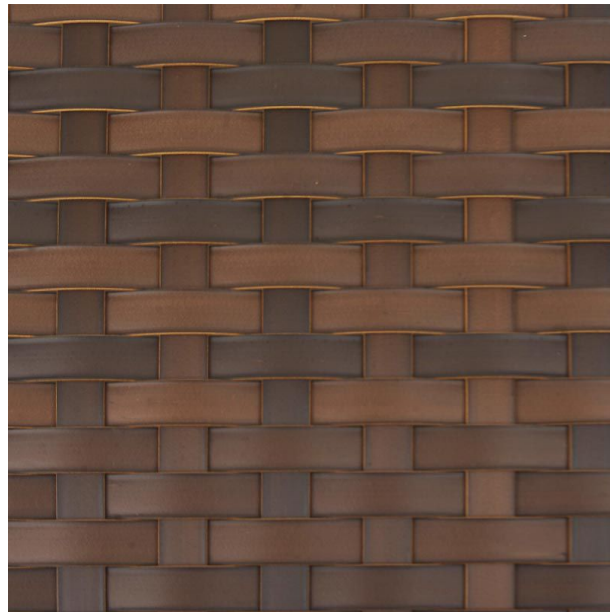
Has applied for a patent, all rights reserved.



CLOTH TEXTURE
SERIES
布纹系列



WEAVING REFERENCE



Reference closing method



End with rivets



Closed in the frame



The seam of the frame is opened, which can be closed in the frame.



Reference use

The image is only a reference to show how to use rattan, copyright belongs to the company of the product, counterfeit consequences.

THANKS

AGO
PLASTIC RATTAN
SINCE 1999

www.china-ago.com

佛山市艺骏雄塑胶仿藤有限公司
AGO PLASTIC RATTAN CO.,LTD.

TEL:86-757-26600661/26600662

FAX:86-757-26322441

